

SWER
Nutzfahrzeugtechnik

X

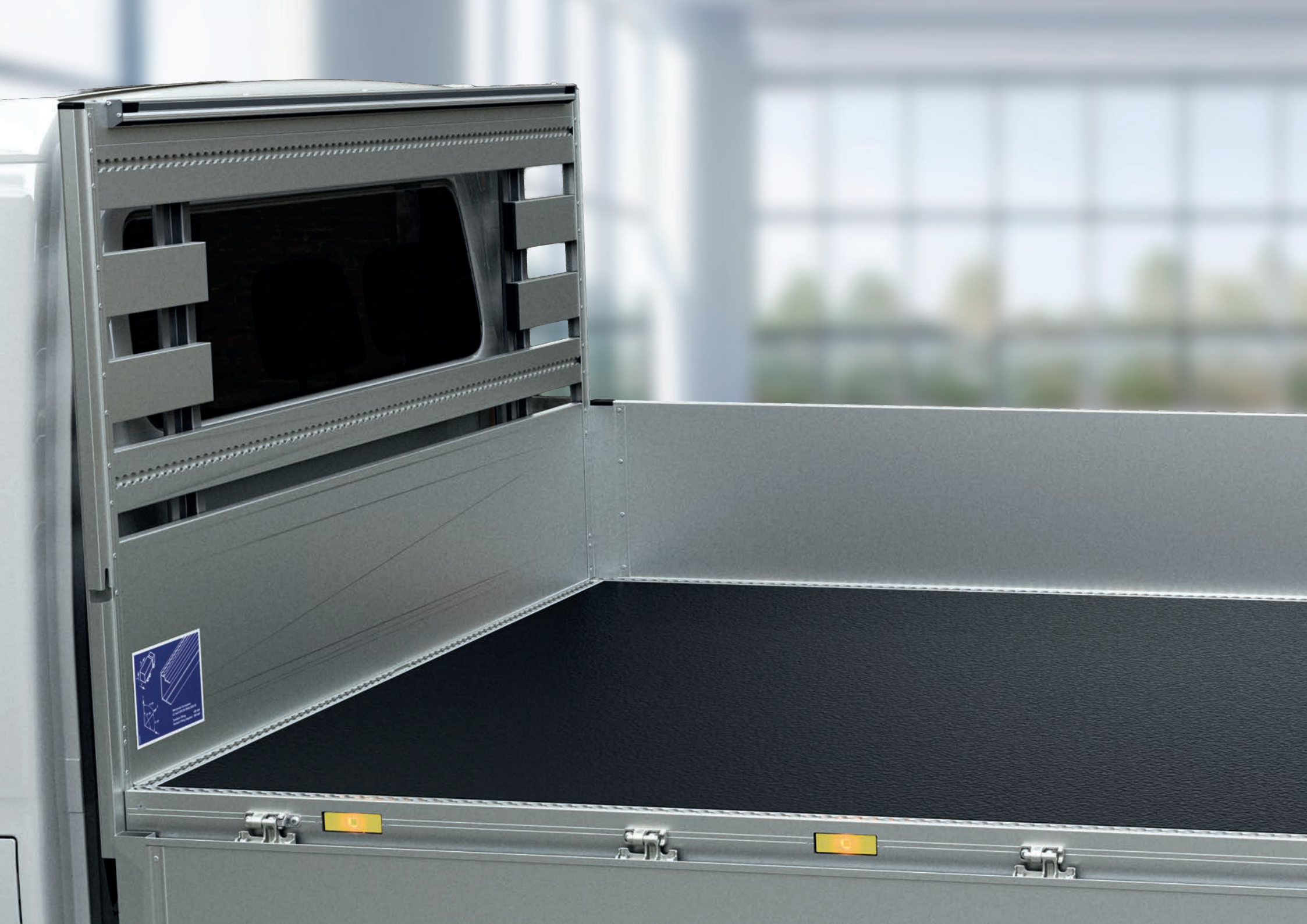
KIA



made in
germany

ASPLe

The lightweight flatbed
for Kia PV5 Chassis Cab!

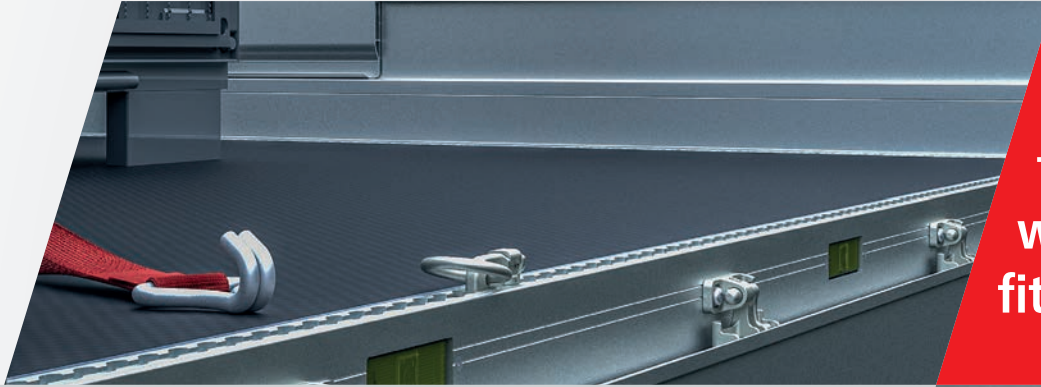


ASPL^e

The Aluminium-Screw-Platform Light
for electric vehicles.



Free loading space without fixed pillars thanks to
the T50 Dropside Lock System.



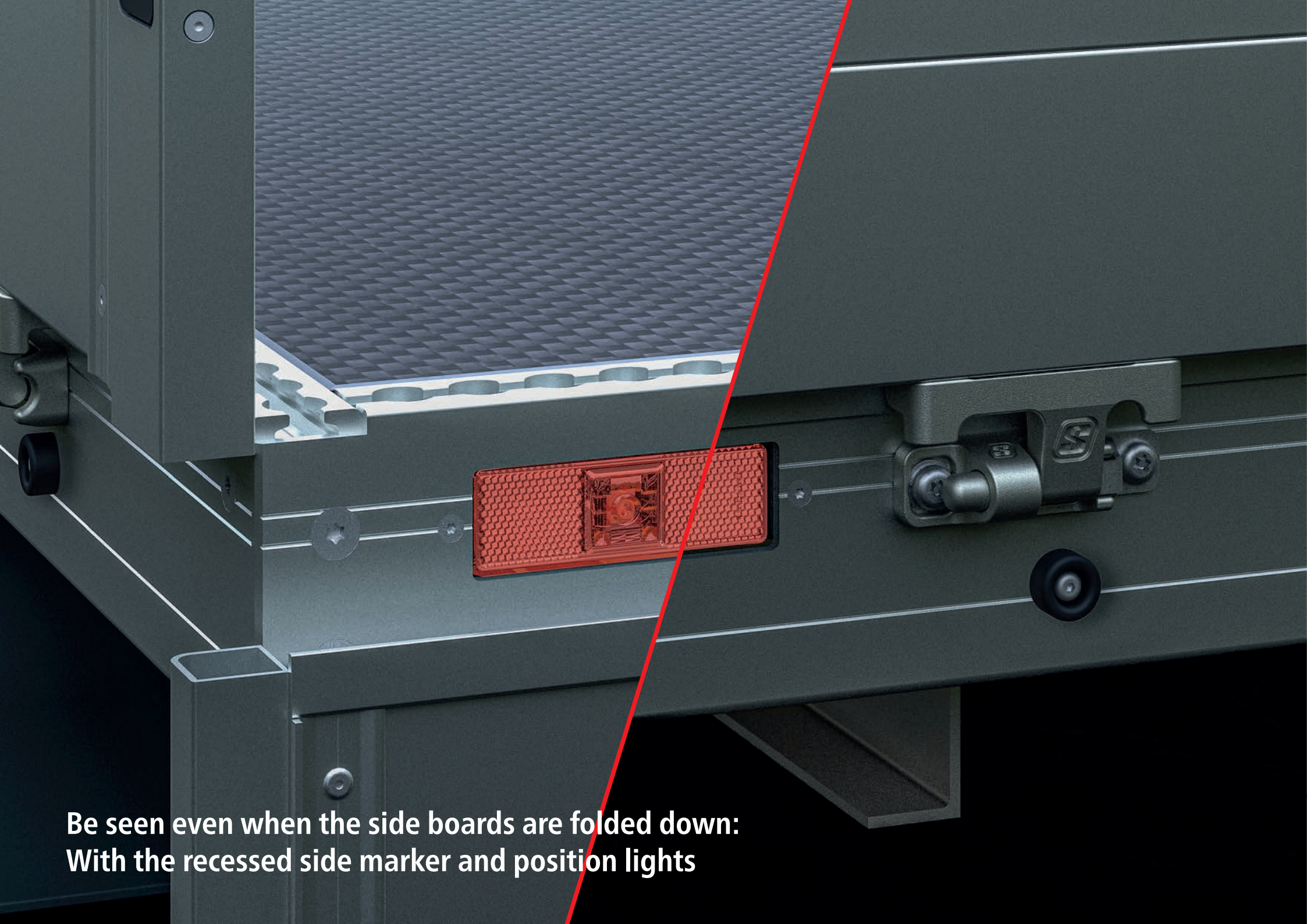
Circumferential airline floor frame profile for flexible load securing in accordance with DIN EN 12640. 6 double airline fittings are included as standard are included.

Sliding folding step at the rear for safe access to the platform

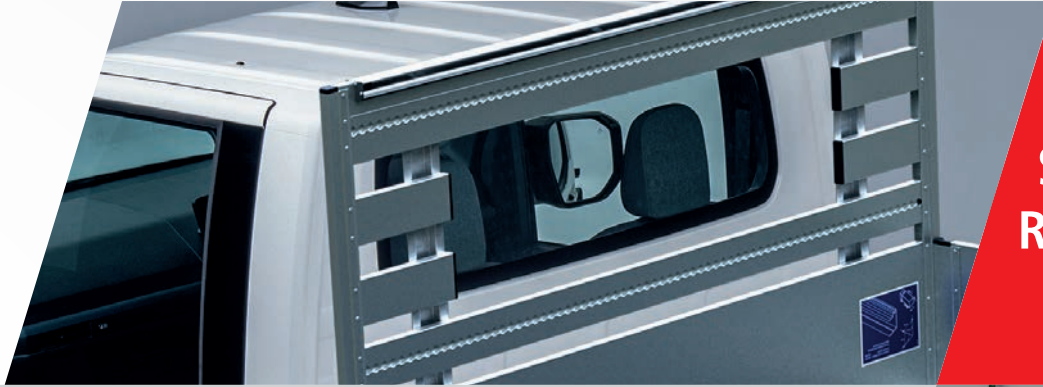


Airline profiles in front wall gallery for transport safety



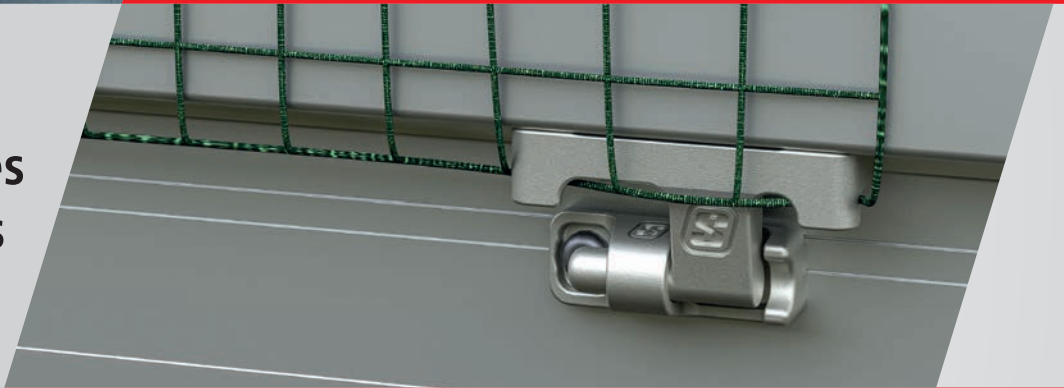


**Be seen even when the side boards are folded down:
With the recessed side marker and position lights**

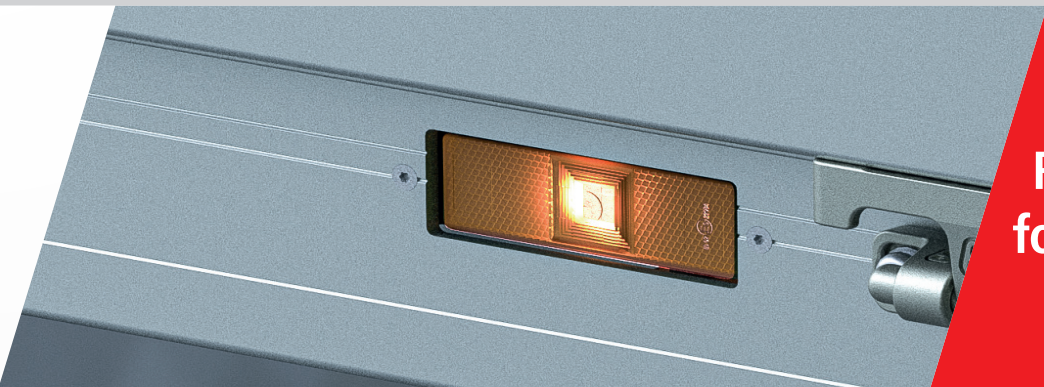


**Suitable clearance for
Rear window in the front wall**

**Stainless steel hinges
with integrated net hooks for cover nets**



**Recessed side marker and position lights
for greater passive safety**





Swep
Nutzfahrzeugtechnik



EUR

EPAL

**LIGHT,
ANODISED AND
PRE-ASSEMBLED!**



Designed for two pallets positioned one behind the other (lengthwise).
Clear length 2455 mm
Clear width 1850 mm



Swep
Nutzfahrzeugtechnik



ASPL^e Cover UP

Optional LiteRack¹ tarpaulin frame

- » Corner-, pillar- and support-reinforced 680 g/m² PVC tarpaulin
- » RAL color freely selectable, standard traffic white or deep black
- » Roof with 5° pitch
- » Roll-up system with pull tab on left, right and rear side
- » All-round eyelets on all 4 sides
- » Twist locks made of stainless steel
- » Height to lower edge of tarpaulin frame: 1,250 mm; total height: 1,431 mm



ASPL^e Load UP

Optional SafeRack[®] transport rack



CERTIFICATE

Z26011902-1

- » Available as either a front or a front and rear
- » Integrated airline system
- » Rubber pad supports
- » TÜV certified according to DIN EN 12642, Annex B, and VDI 2700
- » Maximum total load weight 150 kg

ASPL^e Style UP

Optional side panels

- » Made of stainless steel
- » Matt black powder coated



Contact our specialist advisor for personal and tailored consultation.

Ulrich Mikus
+49 2196 946-119
gpf-alu-technik@suer.de





Address:

Handelsstraße 5
DE 42929 Wermelskirchen
Phone +49 2196 946-0
Fax +49 2196 946-100

E-Mail: info@suer.de
www.suer.de
www.fahrzeugbau-shop.de

© 2026 Suer Nutzfahrzeugtechnik GmbH & Co. KG

